

RULES AND REGULATIONS

For the purpose of adding to the beauty of the Cemetery by giving it a uniform appearance; also, to aid in the maintenance and mowing of lots, the following rules and regulations were adopted by the City Commission on December 11, 1944:

No curbs or coping are permitted around lots in the new area.

No planting of trees, shrubs or flowers on lots is permitted except on approval of the sexton.

The number of shrubs or plants permitted on a whole lot is limited to six.

A half or quarter lot is to be allowed only its proportionate part of the six shrubs or plants.

The following is a list of flowers and shrubs which the sexton will approve for planting on cemetery lots:

Nandina	Wax Ligustrum
Bonita arbor-vitae	Pittusporum
Crepe myrtle	Spirea
Cape jasmine	Euonymus
Genisa	Hypericum
Abelia	Rose bushes
or similar plants of the dwarf variety	

A small bed of pansies, geraniums or similar annuals are also permissible.

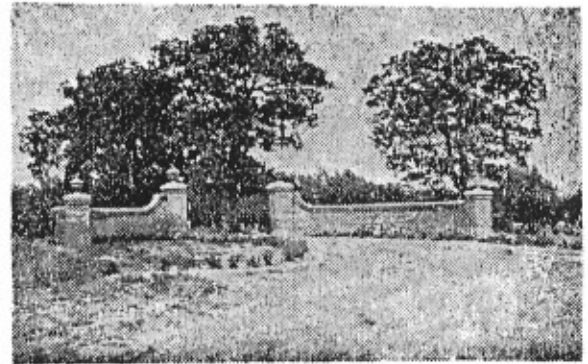
CEMETERY IMPROVEMENT PROGRAM

A program of Cemetery improvements, submitted by the Bryan Cemetery Association, was approved by the City Commission on December 11, 1944. The high points of the program are: Lay additional water lines to which a sprinkler system could be installed, plant grass under shade trees, replace dead trees, fill in low places, make improvements in streets and drainage, build a suitable fence around the Cemetery especially on the back side of the new area, begin a financing plan for erecting a chapel in the Cemetery.

Prepared 1948 by Miss Lucy Harrison, Sec.

City of Bryan Cemetery

Bryan, Texas



Former Entrance, now, used as Exit

North Washington & Highway No. 6

Established June 13, 1868

THE BRYAN CEMETERY

The Bryan Cemetery, a municipal project, was established on June 13, 1868, when the City of Bryan bought from J. C. Hubert 20 acres of land on the northern outskirts of Bryan for \$100.00. Additional acreage was first added in 1915 and from time to time until it now contains 48 acres of land, and the cost of the additions was \$9,650.

In 1945 in order to let the Cemetery increase its front footage along the highway D. Mike gave 1.08 acres of land to the Cemetery. J. W. English left a \$5,000 trust fund to aid in the upkeep of the Cemetery. Mrs. Rachael Sims Mills also left \$500.00 in trust.

There is also an endowment program which many have chosen to participate in by purchasing endowment certificates insuring the perpetual care of their lots.

The price of the lots range from \$15 to \$80 according to the size and location. No endowment charge is included in the price of the lots.

The Cemetery is maintained from the benefit of these trust funds, the sale of lots, endowments and annual dues which the members of the Cemetery Association pay and is further augmented by approximately \$8,000 annually from tax money to keep the Cemetery beautiful.

One part of the Cemetery has been designated as "Babyland" which provides single grave spaces for the interment of babies.

The Bryan Cemetery Board, composed of five members, acts in an advisory capacity in the operation of the Cemetery.

THE BRYAN CEMETERY ASSOCIATION

The Bryan Cemetery Association was organized November 30, 1920. Geo. A. Adams was the first president, and served for 10 years. The Executive Board was composed of Mesdames Mary Carr, J. E. Covey, W. S. Howell and Dona Carnes; Messrs. George A. Adams, F. L. Cavitt, and E. J. Fountain. The number was increased from 7 to 20 members on January 12, 1933.

The regular meeting of the Board is held on the 2nd Thursday of each month, except July and August, at 10 a. m. at the City Hall.

The annual membership meeting is held on the 2nd Thursday of January at 10 a. m. at the City Hall.

Annual dues for membership in the Association are \$1.00 per year. Annual fees for maintenance of cemetery lots are \$6.00 for one lot, \$4.00 for one half lot, and \$2.50 for one quarter lot, payable on or before March of each year to the treasurer of the Association.

A permanent endowment plan was established in 1923. A lot may be endowed for perpetual care and beautification for \$200. Approximately 100 lot owners have taken advantage of this plan, and the Cemetery Association is making an effort to double this number in order that the combined income could then be used more economically in maintaining lots with perpetual care.

A half lot or less can be endowed for \$100. Any member of the Cemetery Board or the Cemetery Association will be glad to give further information on this endowment plan.

RULES for the Operation of BABYLAND

These special rules shall govern:

- (A) Grave spaces must be flush with the top of the ground and grass covered.
- (B) No copings of any material outling the grave space will be allowed.
- (C) No planting of trees, shrubs, or flowers of any description on the grave space.
- (D) All grave space to be marked. An inexpensive marker is provided by the Cemetery Association but, if a more expensive one is desired, a slab of granite or marble may be used with dimensions of 8 x 1+ x 2 inches and laid flush with the top of the ground.

BRYAN CEMETERY ASSOCIATION

Much of the credit for the beautiful condition in which the cemetery is regularly maintained is due the Bryan Cemetery Association.

The Association, made up of lot owners and governed by an executive board of twenty dedicated citizens, meeting monthly, formulates the plans for its beautification and acts in an advisory capacity.

The Cemetery Association was organized in 1920 by the Bryan Chamber of Commerce, which saw the need of additional beautification over and above the regular maintenance provided by the city. Its first president was Geo. A. Adams, who president for 10 years. O. A. Ashworth is presently serving his 14th year as president.

ASSOCIATION IMPROVEMENTS

- ✦ Erected a beautiful Roman Brick entrance and installed sidewalks, sprinkling system, plantings and street paving.
- ✦ Enclosed the cemetery with a six foot chain link fence.
- ✦ Laid additional water lines making city water available to all lots.
- ✦ Promoted the \$50,000 Myrtie Astin Memorial Chapel.
- ✦ Established BABYLAND for low cost burial of infants.

OTHER IMPROVEMENTS:

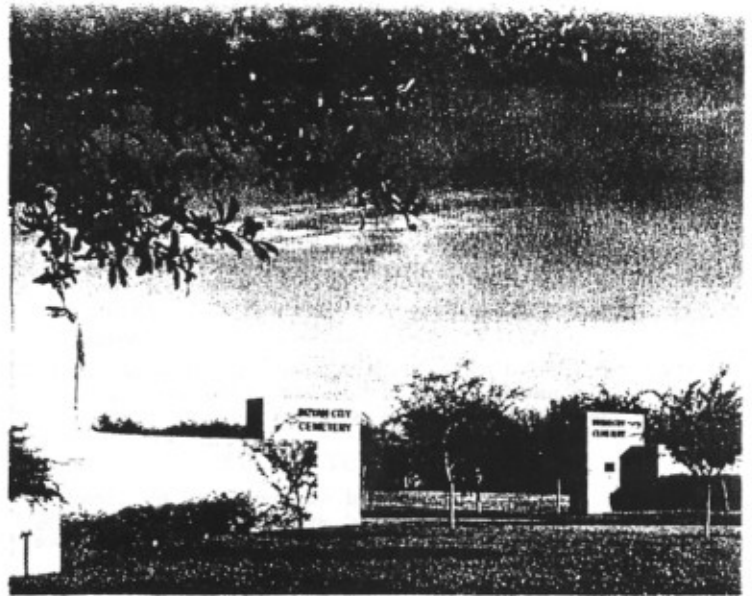
- ✦ Recommended the building and completion of a large warehouse and office.
- ✦ Straightened channel of large ditch on the southern border, planted double row of Live Oak trees along entrance road, straightened leaning monuments, and many other improvements.

NEW PROJECT

Our newest project, and the largest so far undertaken, is the installation of standard city-type concrete gutters. These gutters not only make for better maintenance and drainage of the streets but widen them for modern traffic.

Prepared 1966 by O. A. Ashworth —

Died July 23, 1968



New Entrance

BRYAN CITY CEMETERY

Washington
North ~~College~~ Avenue, Bryan, Texas

✦
Established June 13, 1868

THE BRYAN CEMETERY, municipally owned, was established on June 13, 1868, with the purchase of 20 acres of land for \$100 from J. C. Hubert in what was then the northern outskirts of the city. Keeping pace with the growth of Bryan, additional acreage has been purchased from time to time until at present the original tract has increased to 48 acres, all under a cyclone fence. In 1945 Mr. D. Mike donated 1.08 acres which provided complete frontage on College Avenue. This, with the original tract, seemed adequate for our cemetery needs for many years ahead. However, looking still further into the future, the city fathers in 1949 purchased from the American Legion 8.8 additional acres immediately adjoining the cemetery. There has been no need to develop this land as the acreage remaining in the original cemetery tract is ample for many years to come. In any event, the City of Bryan is morally obligated to provide cemetery facilities for its citizens as long as the city, or the need, exists.

PERPETUAL ENDOWMENT

An endowment plan providing perpetual care of lots fulfills a need expressed by many lot owners, and over 200 lots have been so endowed to date. The cost of endowing a full lot of 12 grave spaces is \$200 and a half lot of 6 spaces, \$100. No endowment charge was included in the price paid for these older lots.

NEW PRICES OF GRAVE SPACE

In 1961 new prices of grave spaces in city cemetery, including perpetual care, were established as follows:

SINGLE GRAVE SPACE..... \$70.00
FULL LOT (6 Grave Spaces).....\$400.00

The City of Bryan will purchase from lot owners any unused portion of their plot in the cemetery at the present rate of \$25.00 per grave space.

TRUST FUND

In 1961 a trust fund was started for the perpetual care of the cemetery and, as of the present time, 50% of the money realized from the sale of cemetery space is set aside for this purpose.

RULES

for the Operation of the Cemetery

PERPETUAL CARE. The terms "*Perpetual Care*" and "*Endowed Lots*" used in reference to plots within the cemetery, shall mean that the respective spaces or lots, so endowed, shall be kept in proper condition perpetually or so long as the City of Bryan exists.

This includes the care and maintenance of the plot in as near the same condition as when first endowed in so far as the funds allotted for this purpose will permit.

These terms shall not be construed as meaning the maintenance or replacement of monuments, copings or other installations erected upon the plots.

PREPARATION OF THE PLOT.

(A) No copings or plantings outlining the border of the plot, or walks of concrete or other material, will be permitted.

(B) All lots shall conform to a level predetermined by the Superintendent.

(C) Only those shrubs approved by Superintendent as to height and numbers will be allowed on each lot.

(D) The planting of trees on the plots will not be permitted but they may be planted along road-sides adjacent to the lots if approved by the Superintendent.

CEMETERY NOT RESPONSIBLE.

The cemetery shall take reasonable care to protect the property rights of plot owners, but disclaims all responsibility for loss or damage caused by action of thieves, vandals, or other causes beyond its control.

CEMETERY RESERVES RIGHT.

The cemetery reserves the right to remove from the plots any dead or diseased trees, flowers, plantings, floral designs, vases, baskets, ornaments, etc. as soon as in the judgment of the Superintendent they become improperly maintained, unsightly, or when they do not conform to standards set up by the cemetery.

MONUMENTS.

Monument dealers must notify the Superintendent of their intention of erecting a monument before proceeding with the work, and the site and excavation must be approved by the Superintendent so that it will not interfere with the placement of a monument on an adjoining lot. Also allowance must be made for the future filling-in of the lot to the prescribed level of lots already established.

LEANING MONUMENTS.

As a protection to the lot owner and in order to prevent the leaning of monuments due to inadequate foundations, all monuments and markers installed henceforth must have concrete bases and piers and the following specifications must be strictly adhered to.

FOUNDATION SPECIFICATIONS.

(A) Main foundations for monuments up to 6 feet in length must be at least 10 inches thick and piers underneath must be no less than 8 inches by 3 feet deep with a minimum of 2 piers.

(B) Foundations over 6 feet must be at least 12 inches thick reinforced with steel rods and no less than 3 piers.

(C) All piers under MARKERS must be no less than 3 feet deep.

EXCEPTIONS.

Should special cases arise, the Cemetery Board reserves the right to make temporary exceptions or modifications of these rules when in its judgment the same appears advisable.



In 1947 a space was set aside for the low-cost burial of infants under five years of age. This was appropriately named "BABYLAND." The original tract of 250 grave spaces has been exhausted but another of similar size behind the monument is in use and additional plots will be opened as needed.

Present prices for these spaces are as follows:
SINGLE GRAVE SPACE.....\$10.00
OPENING, CLOSING GRAVE..... 10.00
MARKER 5.00