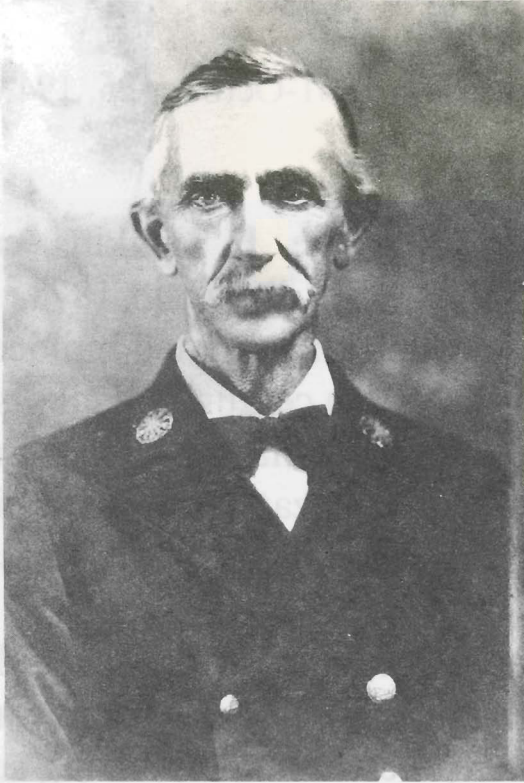


CHARLIE ERIC JENKINS

1861 - 1943



Texas Historical Marker Dedication

Sunday, October 31, 1993

Bryan City Cemetery

Bryan, Texas

2:00 p.m.

CHARLIE ERIC JENKINS

(November 4, 1861-October 26, 1943)

English Native Charlie E. Jenkins came to America in 1873 and to Bryan in 1878. One of Bryan's most prolific and talented builders of the late 19th and early 20th centuries, Jenkins' legacy of distinctive structures has been recognized by national and state organizations for their historical and architectural significance. Jenkins is known for his masterful use of natural lighting and for employing many different styles. In addition to his architectural contributions, Jenkins also was active in the city's civic affairs, having served as both Fire Chief and City Building Inspector.

(1993)

This marker was sponsored by the
Brazos County Historical Commission

PROGRAM

Welcome and
Recognition of Guests

Charles Schultz
Brazos County
Historical Commission

Comments about
Charlie Jenkins

Jenkins Family Member

Architectural Legacy
of Charlie Jenkins

Nancy Volkman
Bryan Historic
Landmark Commission

Presentation of Marker

Colleen Batchelor
Brazos County
Historical Commission

Acceptance of Marker

Jenkins Family Member

Special thanks to Bob Holmes, Sexton of the Bryan City Cemetery,
for his gracious assistance with the installation of the marker.

